

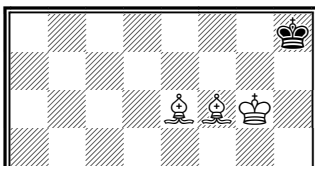
Two Bishop Checkmate



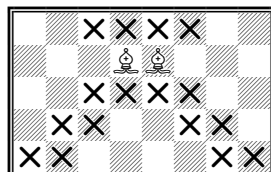
KidsChessWorld
Learning Chess is now Easy!

This checkmate is tricky but shows the power of having two bishops in an end-game situation

The end position for the 2 bishop checkmate has the king pushed into a corner checkmate.

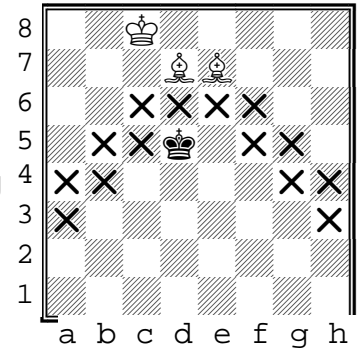


The secret behind this checkmate is understanding the power of the paired bishops. Together they form an impenetrable barrier.



Step 1:

Double up your bishops and put the opposing king within the 'scissor' trap.

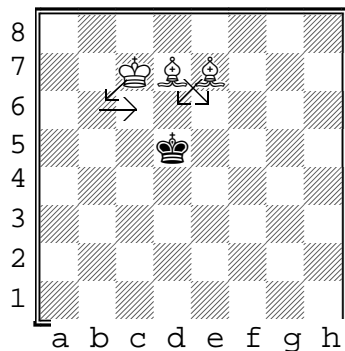


Step 2:

Advance the double bishops, using your king to bully the opposing king to an edge.

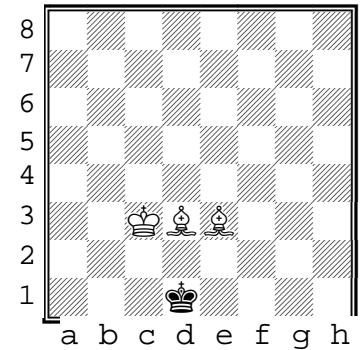
Here are the basic moves from this position:

Kc7-b6	Kd5-e5
Kb6-c6	Ke5-d4
Be7-d6	Kd4-e4
Bd7-e6	...



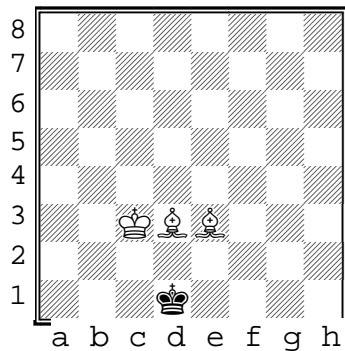
Step 3:

Repeat these basic moves until you have driven the king to the edge.



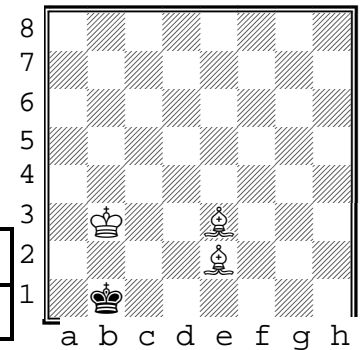
Step 4: From this position, drive the king to the corner with:

Be3-f2	Kd1-c1
Bd3-e2	Kc1-b1
Kc3-b3	Kb1-c1
Bf2-e3+	Kc1-b1



Step 5: Finally, from this position, we get the checkmate with:

Be2-d3+	Kb1-a1
Bc3-d4++	



Notes: Try it again but this time force the king to a different corner..

Think you've got it? See if you can do it with 1 minute on your chess clock. Good luck!