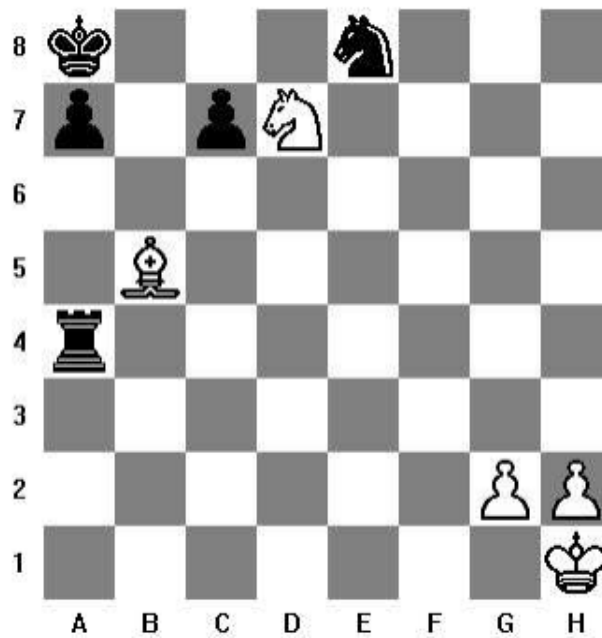
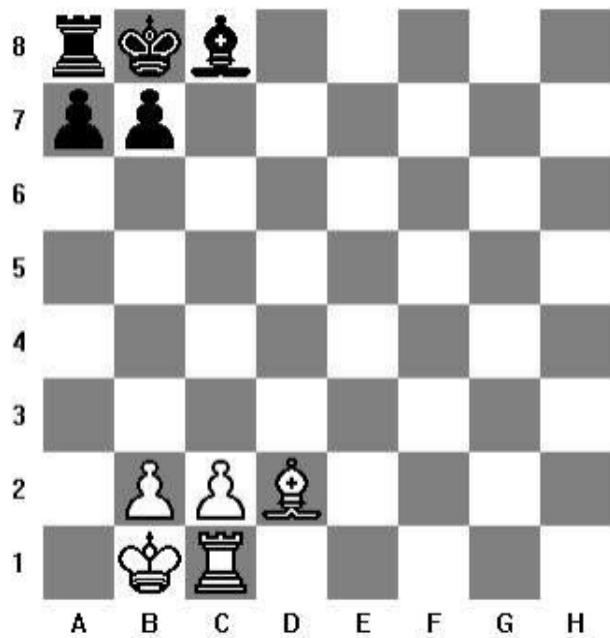
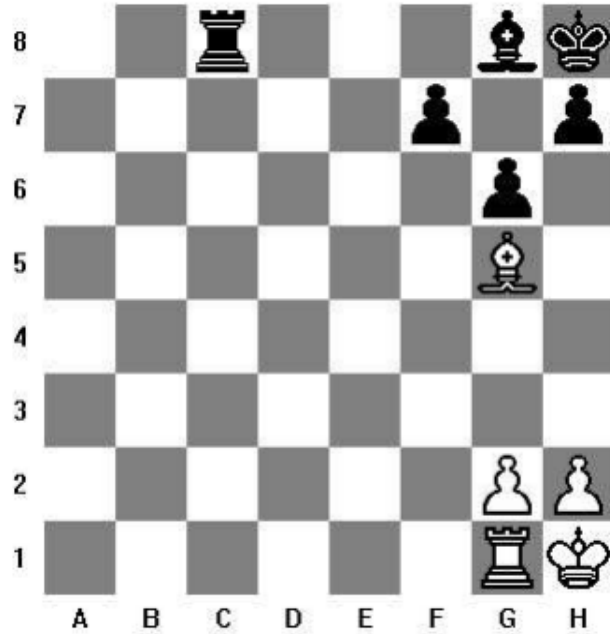
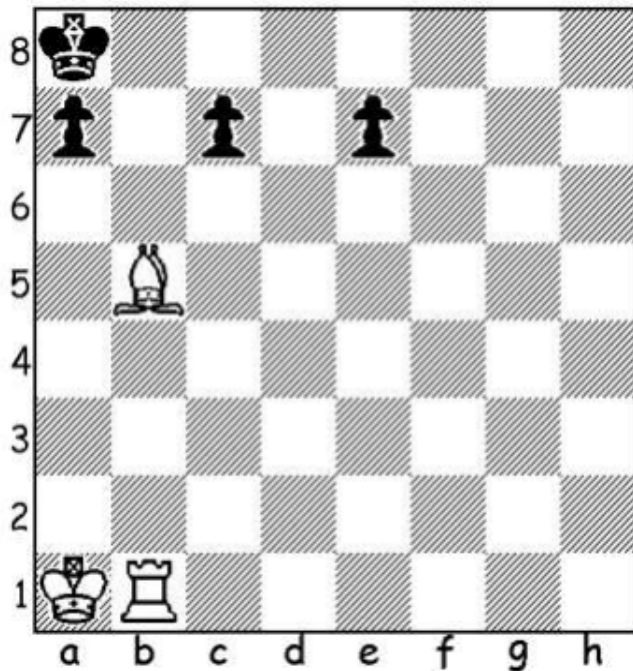


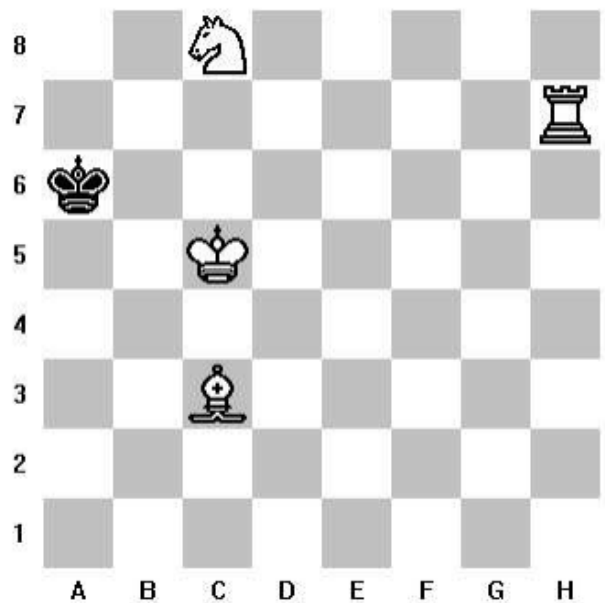
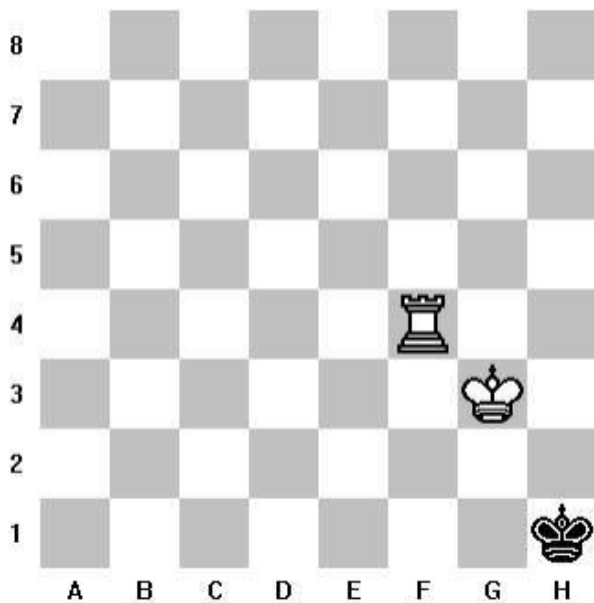
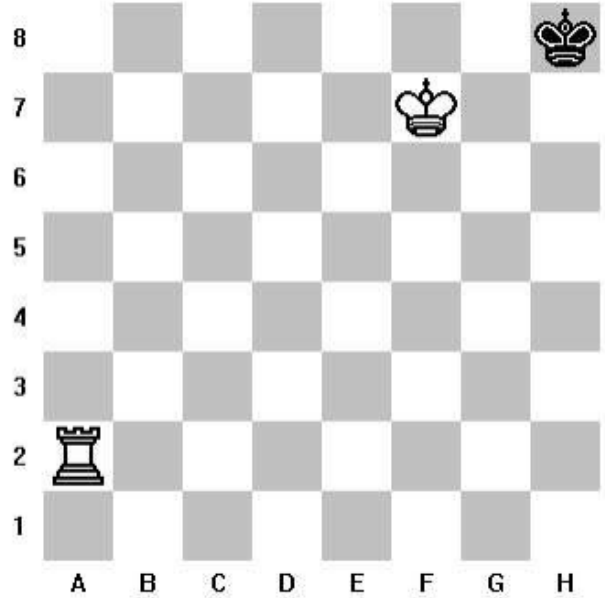
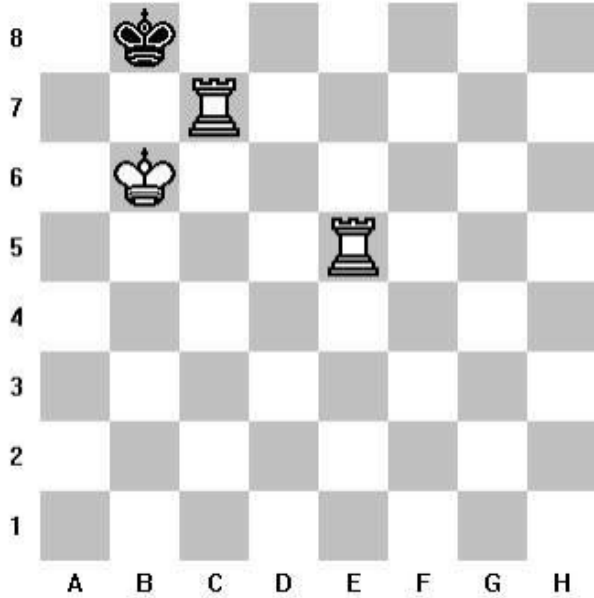
Checkmating Puzzles Level 1

White to move and checkmate in one move. Circle the piece you want to move and draw a line to the square where it will deliver checkmate to the enemy king and then draw a smaller circle on that square.



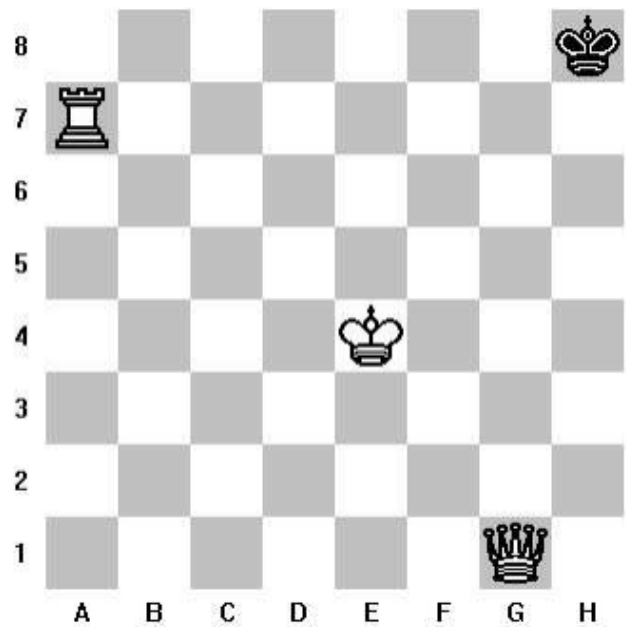
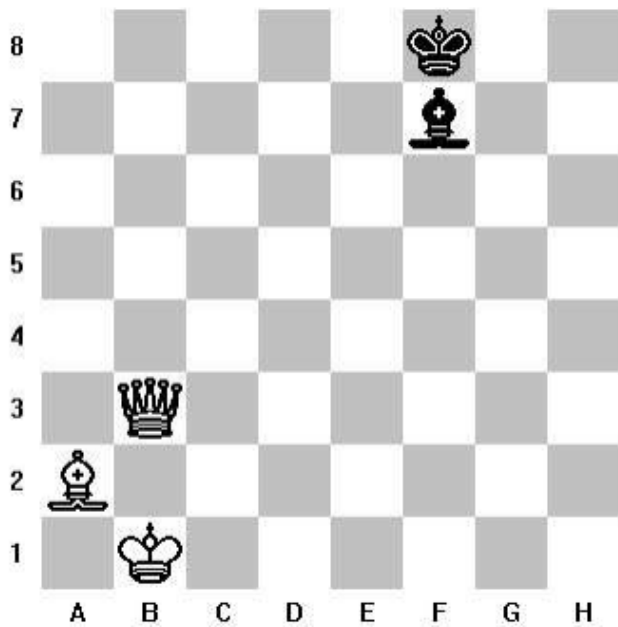
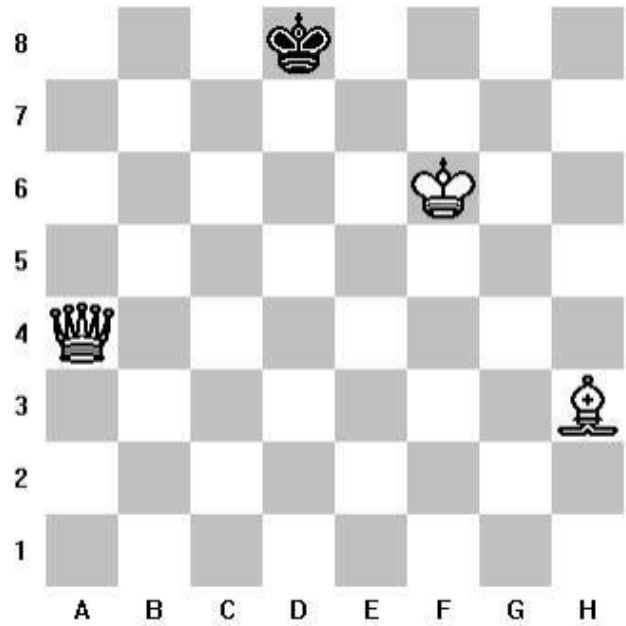
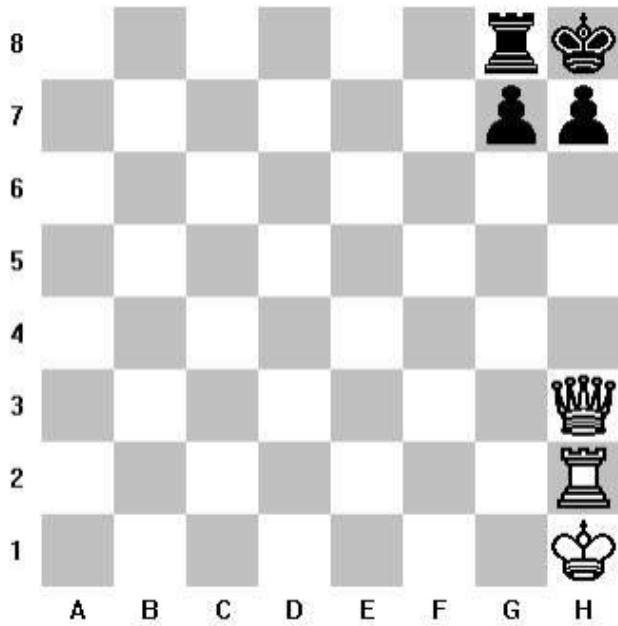
Checkmating Puzzles Level 1

White to move and checkmate in one move. Circle the piece you want to move and draw a line to the square where it will deliver checkmate to the enemy king and then draw a smaller circle on that square.



Checkmating Puzzles Level 1

White to move and checkmate in one move. Circle the piece you want to move and draw a line to the square where it will deliver checkmate to the enemy king and then draw a smaller circle on that square.



Checkmating Puzzles Level 1

White to move and checkmate in one move. Circle the piece you want to move and draw a line to the square where it will deliver checkmate to the enemy king and then draw a smaller circle on that square.

