

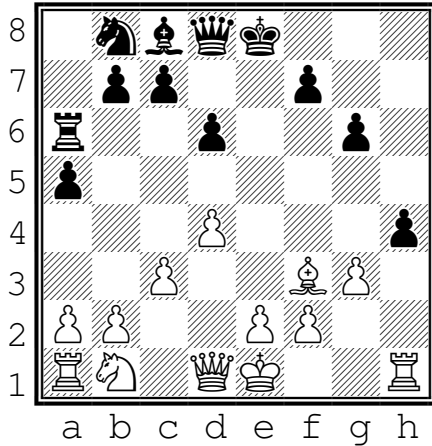
# Queen



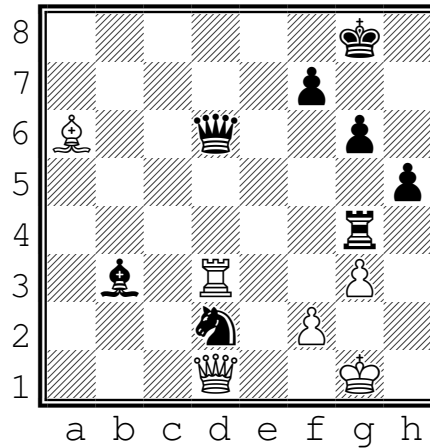
Name: \_\_\_\_\_

## WORKSHEET

What squares can the white Queen move to?  
\_d2\_, \_\_\_\_\_, \_\_\_\_\_, \_\_\_\_\_, \_\_\_\_\_



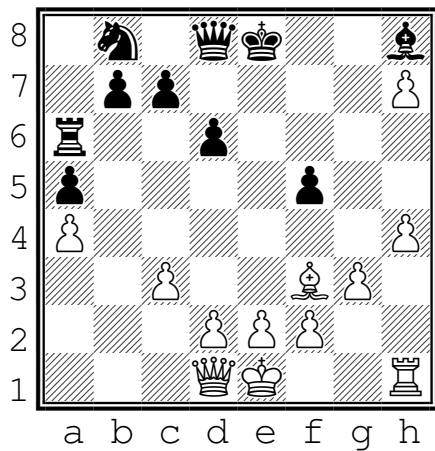
What pieces can the white Queen take? Indicate the squares: \_d2\_, \_\_\_\_\_, \_\_\_\_\_



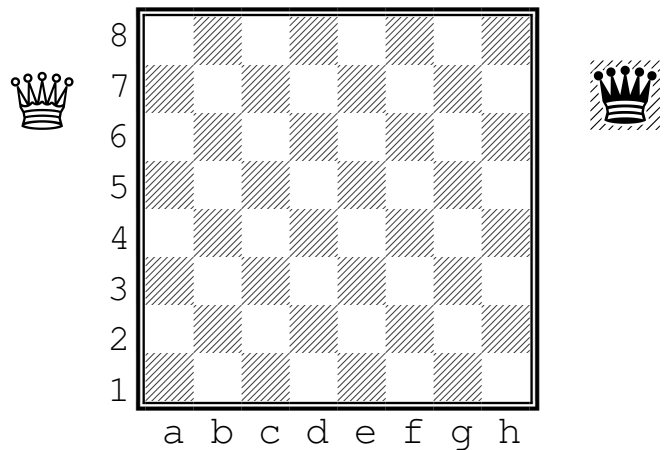
What squares can the black Queen move to?  
\_\_\_\_\_, \_\_\_\_\_, \_\_\_\_\_, \_\_\_\_\_

What pieces can the black Queen take? Indicate the squares: \_\_\_\_\_, \_\_\_\_\_, \_\_\_\_\_

For the white queen to capture the black pawn at f5, what squares would it move to? \_\_\_\_\_, \_\_\_\_\_



Indicate the starting position of the white queen with a "Q"



For the black queen to capture the white pawn at h7, what squares would it move to? \_\_\_\_\_, \_\_\_\_\_

Indicate the starting position of the black queen with an "X"