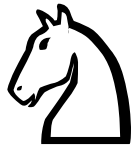


The

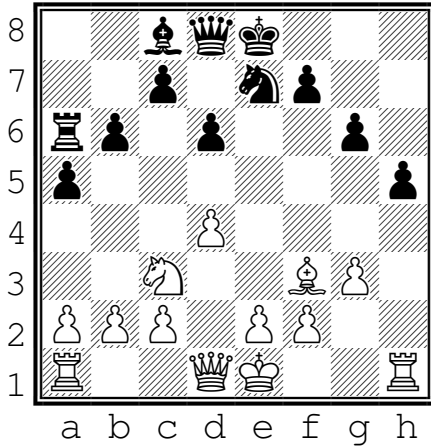
Knight



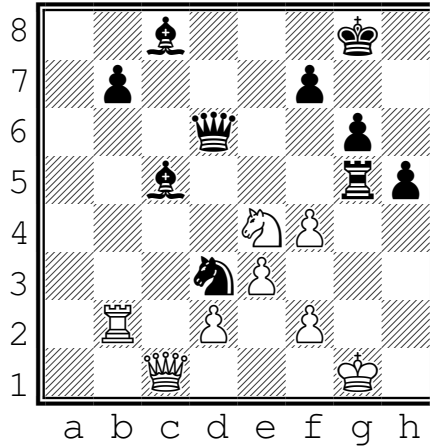
Name: _____

WORKSHEET

What squares can the white Knight move to?
b5, _____, _____, _____, _____



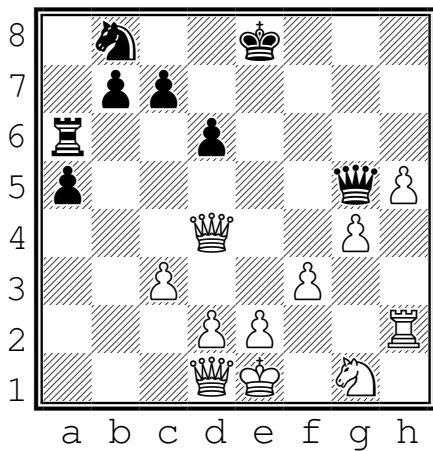
What pieces can the white Knight take? Indicate the squares: _g5_, _____, _____



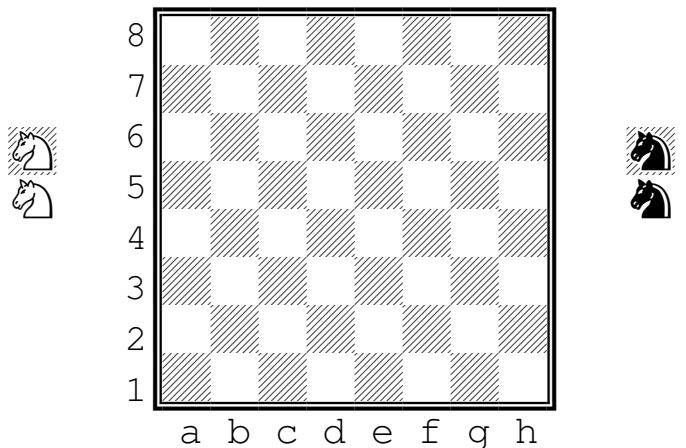
What squares can the black Knight move to?
_____, _____, _____, _____

What pieces can the black Knight take? Indicate the squares: _____, _____, _____, _____

For the white Knight to capture the black queen at g5, what squares would it move to? _____, _____



Indicate the starting positions of the white Knights with a "N".



For the black Knight to capture the white queen at d4, what squares would it move to? _____, _____

Indicate the starting positions of the black Knights with a "X".